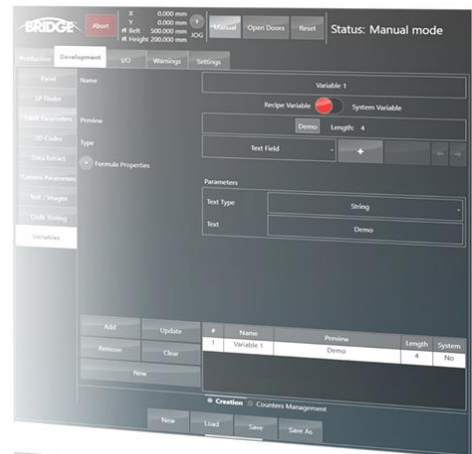
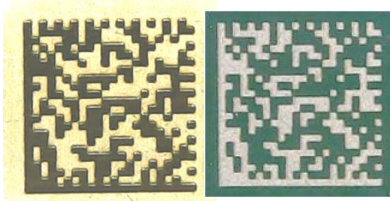


FUTURA

Best Quality, Super Speed, Zero Maintenance... what else!





Specifications

MACHINE DESCRIPTION	
Footprint	500 x 1450 x 1.770 mm
Weight	700 Kg
Control Unit	Proprietary – PC Based
HMI	24" Touch Screen, multilanguage
Color	RAL 9005 Frame, front door; RAL 7035 Side covers, back doors
Codes	Data Matrix ECC200, Code 39, Code 128, 2/5 Interleaved, QR Code, Text
MACHINE CONFIGURATION	
Transport Height	950 mm +/- 25mm
Max Transport Width	350 mm
Interface	SMEMA
Transfer Direction	Left to right (optional right to left or pass-back)
PANEL DIMENSIONS	
Panel Length	70 mm to 410 mm
Panel Width	50 mm to 350 mm
Panel Weight	Up to 3 Kg
Transport PCB	1 ÷ 5 mm ESD belt
Panel Clearance	20 mm up / 30 mm down
Panel Thickness	0.5 mm to 6 mm
Marking Area (Length x Width)	Up to 350 mm x 350 mm
LASER DESCRIPTION	
Laser Type	CO ₂ – λ 10.600 nm
Laser Power	10 W (30W Optional)
Laser Spot	125 µm (5 mils)
INSTALLATION REQUIREMENTS	
Power Supply	230 VAC monophase, 50 Hz (IP+N+PE)
Consumption	1 kW
Air Supply	6 Bar filtered, 200 slpm
Connectivity	Ethernet – Industry 4.0 Compliant