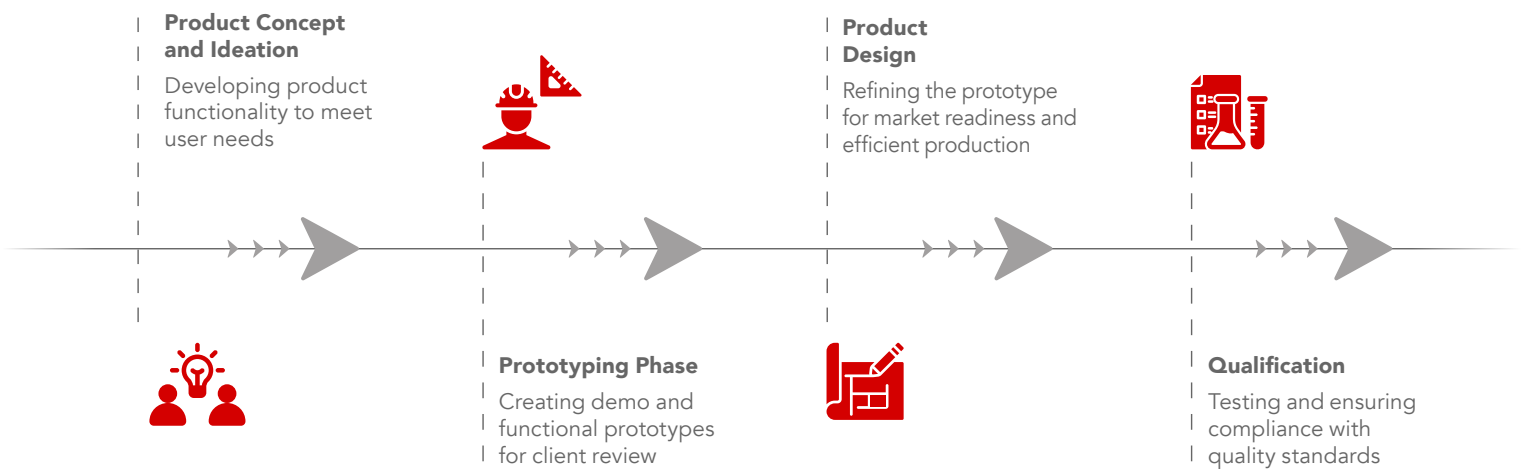


Product Design and Development

Our design and development services include PCB board design and layout, EMC and CE-qualified designs, algorithm and simulation development, communication development, real-time embedded development, infrastructure development, system architecture design, software and firmware design, software and hardware integration, real-time software development, user interface development, as well as industrial and mechanical design.



Full Product Development

Our full product development offering is a top-tier, comprehensive solution for clients in the electronics industry. From initial concept design through all development phases, and up to product launch and mass manufacturing, we execute every step of the design and development process diligently to ensure the final product meets the highest quality and functionality standards, and the aesthetic requirements.

Industrial And Mechanical Design

Our industrial and mechanical design services span from developing mechanical concepts for various products to designing mechanical, plastic, and metal parts, according to the client's preference.

With numerous diversified industrial and mechanical designs over the years, we have developed vast knowledge and unique expertise in product manufacturing technologies and advanced electronic packaging. We utilize the most innovative, cutting-edge developments in the plastics and electronics field, taking into consideration the product complexity in cross-functional interaction.



Where Trust Meets Scale:

Global Electronics Quality Manufacturing, Design, and Sourcing

Hardware And Firmware Design

We specialize in the development of a wide range of electronic products, including electronic and embedded solutions, covering electronics development, embedded software, mechanical parts construction, and prototype manufacturing.

Our Hardware and Firmware Design Services Include:

EVB Testing

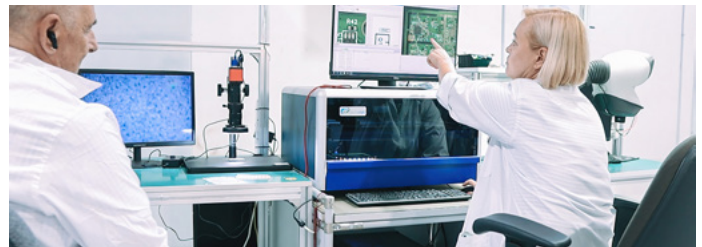
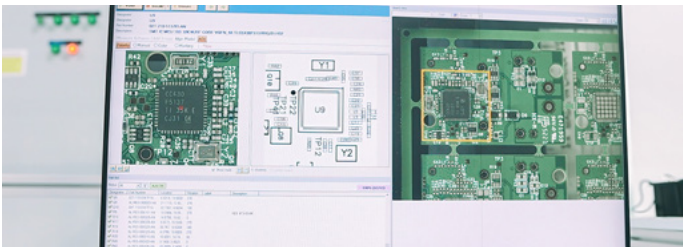
Prototyping and product concept testing using evaluation boards, reference designs, Arduino shields, or other design kits designated for product evaluation.

PCB Design

We specialize in high-speed, multi-layer, mixed signals, and RF PCB design. Coupled with fabrication and assembly, this is one of the added values we offer to clients seeking one partner to cater to all their PCB needs.

Firmware Design

We deliver code and resource management for various CPU architectures supporting product performance even in resource-constrained environments with limited power, memory, and processing resources. Working in agile development methodology, our full-stack embedded developers deliver reliable, high-performance firmware tailored to the client's industry standards, with the most advanced security features built in.



About GML

Global Management Logic (GML) is a global leader in comprehensive design and manufacturing solutions for electronics across diverse markets, from concept to mass production. As a one-stop-shop partner, we deliver complete product development and certification, advanced mass production, and efficient supply chain management - including strategic sourcing and procurement - delivering unparalleled value and performance to our long-term global clients.

With 20+ years of experience, millions of products manufactured, 35,000 sqm of production space, and 26 state-of-the-art SMT lines, we ensure precision manufacturing, full traceability, and rigorous quality control. Our multiple international facilities provide redundancy, exceptional flexibility, and fast response across time zones. Long-standing customers worldwide rely on our experts for close collaboration, transparent operations, and scalable support.

Global Management Logic AG

📍 Gotthardstrasse 26, 6300 Zug, Switzerland ☎️ +41 76 7869251

✉️ Contact@logic-global.com 🌐 logic-global.com 📱 Global Management Logic AG

