

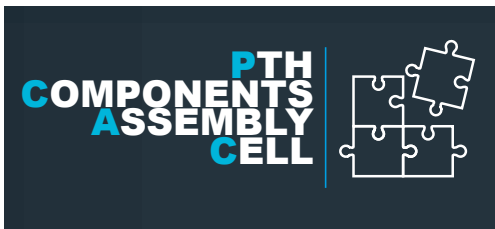
# **P**RODUCT **B**OOK

**COMPLETE SOLUTIONS  
FOR THE AUTOMATED BUSINESS**

**FENIX**  
AUTOMATION  
INDUSTRIAL PROCESSING SOLUTIONS

[www.fenixautomation.com](http://www.fenixautomation.com)



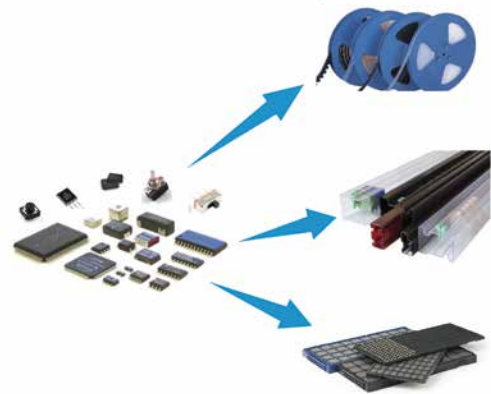


Robotic cell for a wide range of exotic component assemblies and packaging.

**PTH Assembly Cell FX-AO00**



**Packaging Cell FX-CA07**



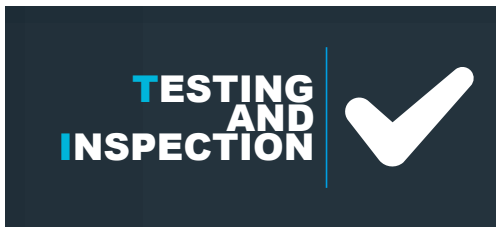
Inline XYZ programmable robotic cell for plasma cleaning. Suitable for PCBs, plastic housings and metal surfaces. Plasma gun selected according to the applications.

**Plasma cleaning FX-PC00**





**Solder paste dispenser FX-PD02**

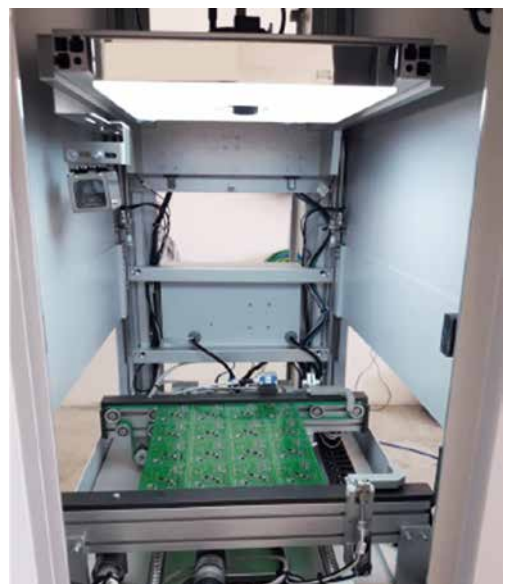


Inspection unit  
Automatic, in line, inspection system. Suitable for:

- Post-dispensing verification
- Post-manual assembly verification

**Test handler FX-NH00**

**Inspection unit FX-PI00 / PI01 / PI02**



# DEPANELING



- In-line and stand alone depaneling cell
- Suitable for medium and high volume production
- New product setup < 3 minutes
- Camera for manual teaching
- Cutting route importable from DXF files
- Compact foot print
- Upper robot suitable for pallet loading

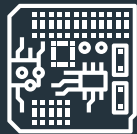
**In-line depaneling cell FX-RA00**



**Standalone depaneling cell FX-RA50**



# BOARD HANDLING



All you need to load, unload, move, flip and store boards on your production lines.

**Conveyors FX-HC00**



**Shuttle conveyor FX-HS25**



**Flat belt conveyor FX-HE00**



**PCB Unstacker FX-HB00**



**Line loaders 3-5 racks FX-HL00**



**Single rack handler FX-HR00 / HR25**





**Single rack handler FX-HR05  
HR31 Basic Line**



**PCB Stacker FX-HB01**



**Line unloaders 3-5  
racks FX-HU00**



**Line unloader  
Bad & Good separator  
FX-HM00**



**Long Board UnLoader  
FX-CA05**



**Single rack unloader  
FX-HR35 Basic Line**



**FIFO 30 PCB buffer FX-HF00**



**FIFO rack FX-HF25**



**Line loaders 2-3  
racks FX-HL30 / HL31**



**PCB Inverter FX-HI00**



**PCB Turn module FX-HT00**



**Operator Station FX-HW00**



**TRACEABILITY**



Laser marking and labeling cell are used for engraving, or labeling directly onto electronic PCBs or the final product cases, barcode, 2d code or images, symbols and editing.

**Flexible laser marking cell FX-ML50**



**In Line labeling system FX-MA01**

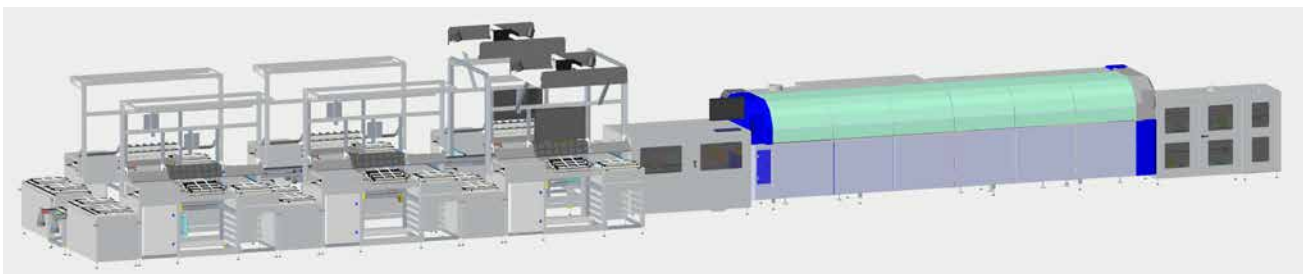
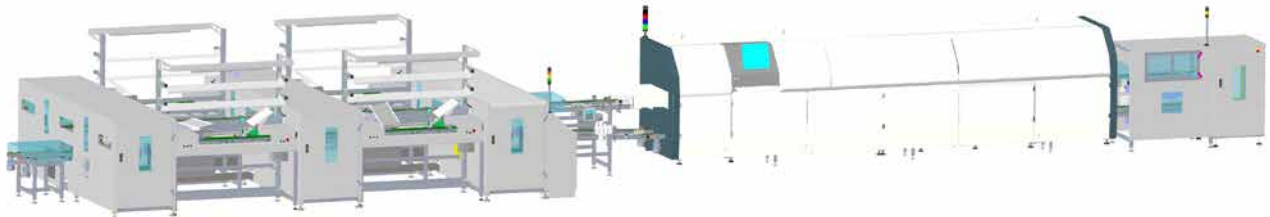
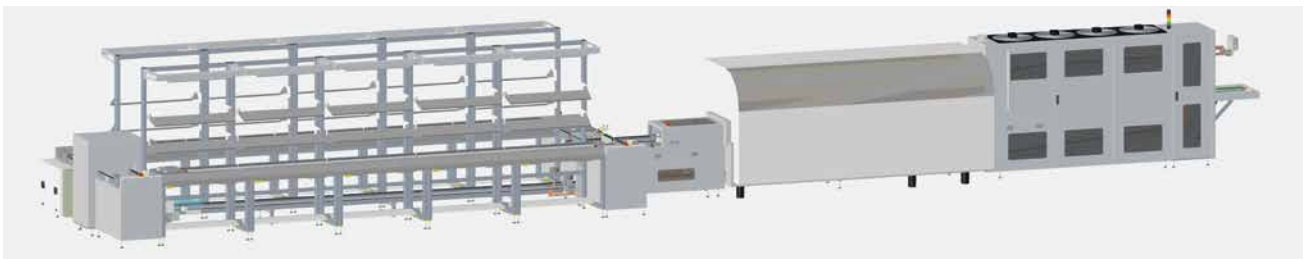


**PCBs  
SOLDERING  
LINE**



Conveyor systems for automatic feeding of wave or selective soldering machines.

**Soldering lines**



## CUSTOMIZATION



Assembling, packaging and dispensing by various models of industrial robot.

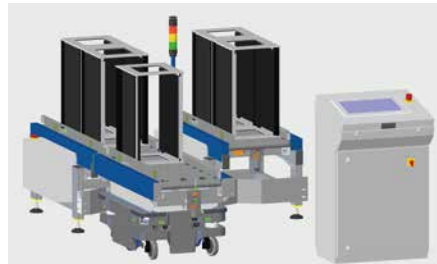


## MOBILE ROBOT



Automatic material handling & transportation

### AMR



## ACCESSORIES



### CAB racks



### FENIX trolley



### REECO ESD INDUSTRIAL TABLE





**Fenix Automation s.r.l.**  
**Via P. Calamandrei, 251 H**  
**52100 Arezzo - Italy**  
**Phone +39 0575 0230893**  
**fenixautomation.com**  
**info@fenixautomation.com**



YOUR REFERENCE POINT



PRODUCT BOOK

