

# Sourcing and Procurement

GML's comprehensive sourcing and procurement services are set to ensure our clients leverage a worldwide, efficient, and scalable supply chain management and gain seamless access to high-quality electronic components, PCBAs, mechanical parts, and manufacturing supplies from trusted sources. Our established partnerships and extensive network provide a strong foundation for exceptional sourcing solutions that integrate directly with our design and manufacturing services. From active and passive components to optoelectronic parts and communication antennas and modules, we source all BOM items.

## Value-Driven Procurement Process

Our component procurement process is designed to maximize efficiency and deliver strategic value:

- Product Identification and Supplier Evaluation, ensuring high-quality and reliable components.
- Bidding, Negotiation, and Supplier Selection, leveraging our large purchase volume and strategic vendor relationships to secure competitive pricing and favorable terms.
- Purchase Requirement Fulfillment, through a seamless, time-saving process.
- Ongoing Supplier Performance Management, to maintain top-tier quality and reliability.

## Reliable Manufacturing Parts

We source high-quality manufacturing components directly from original manufacturers, agents, or authorized distributors, securing component authenticity, high quality, and availability.

- Access to global stock from OEMs and trusted distributors.
- One-stop BOM Service for an efficient and streamlined sourcing experience.
- Strong supplier relations allow us to provide preferred access to components, availability insights, and competitive commercial terms.



Where Trust Meets Scale:

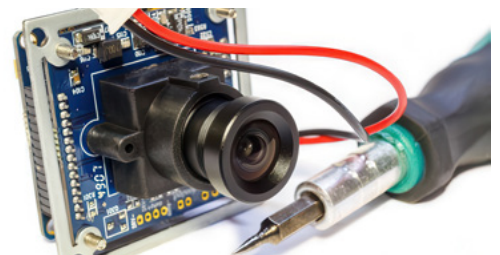
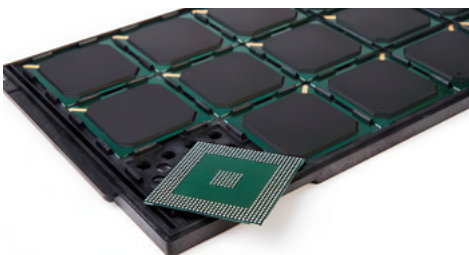
Global Electronics Quality Manufacturing, Design, and Sourcing

## Flexible, Customized Solutions

Our services are tailored to meet specific requirements, including specialized logistics and worldwide storage solutions. Through our long-term relations with leading electronic manufacturing services providers, we've established a strong ecosystem of manufacturers and vendors of all BOM parts and components. This ecosystem allows us to uniquely offer our clients customized and tailored components to cater to their specific needs (e.g., batteries, antennas, cables, connectors, shields, plastic parts, silicon, and metal parts), ensuring a flexible and responsive service every step of the way.

## Why Clients Retain Our Procurement Services

- **Time Savings and Cost Efficiency:** Our service model frees up your purchasing department to focus on high-impact, strategic activities, thus reducing operational costs.
- **Guaranteed Quality and Authenticity:** By working exclusively with authorized distributors and original manufacturers, we ensure every component is genuine and meets quality standards.
- **Direct, High-Value Supplier Relationships:** Our volume of operations and daily interaction with suppliers and original manufacturers secure prioritization in component allocation periods to allow continuous production and competitive component costs .



## About GML

Global Management Logic (GML) is a global leader in comprehensive design and manufacturing solutions for electronics across diverse markets, from concept to mass production. As a one-stop-shop partner, we deliver complete product development and certification, advanced mass production, and efficient supply chain management - including strategic sourcing and procurement - delivering unparalleled value and performance to our long-term global clients.

With 20+ years of experience, millions of products manufactured, 35,000 sqm of production space, and 26 state-of-the-art SMT lines, we ensure precision manufacturing, full traceability, and rigorous quality control. Our multiple international facilities provide redundancy, exceptional flexibility, and fast response across time zones. Long-standing customers worldwide rely on our experts for close collaboration, transparent operations, and scalable support.

### Global Management Logic AG

📍 Gotthardstrasse 26, 6300 Zug, Switzerland ☎ +41 76 7869251

✉ Contact@logic-global.com 🌐 logic-global.com 📺 Global Management Logic AG

