

TECHNOLOGY IN MOTION

**EBS** Electric Group

**ELECTRO PROMEX  
ELECTRO PROMEX INVEST  
BKD ELECTRONIC S.A.  
ELECTRO PROMEX S.R.L. & Co KG**

Technology in motion

Street. Anghel Saligny no. 3, Petroșani, County Hunedoara

Phone : +0254542964

Fax : +0254542548

Email : [office@ebs-electric.eu](mailto:office@ebs-electric.eu)

<https://ebs-electric.eu>

**EBS** Electric Group

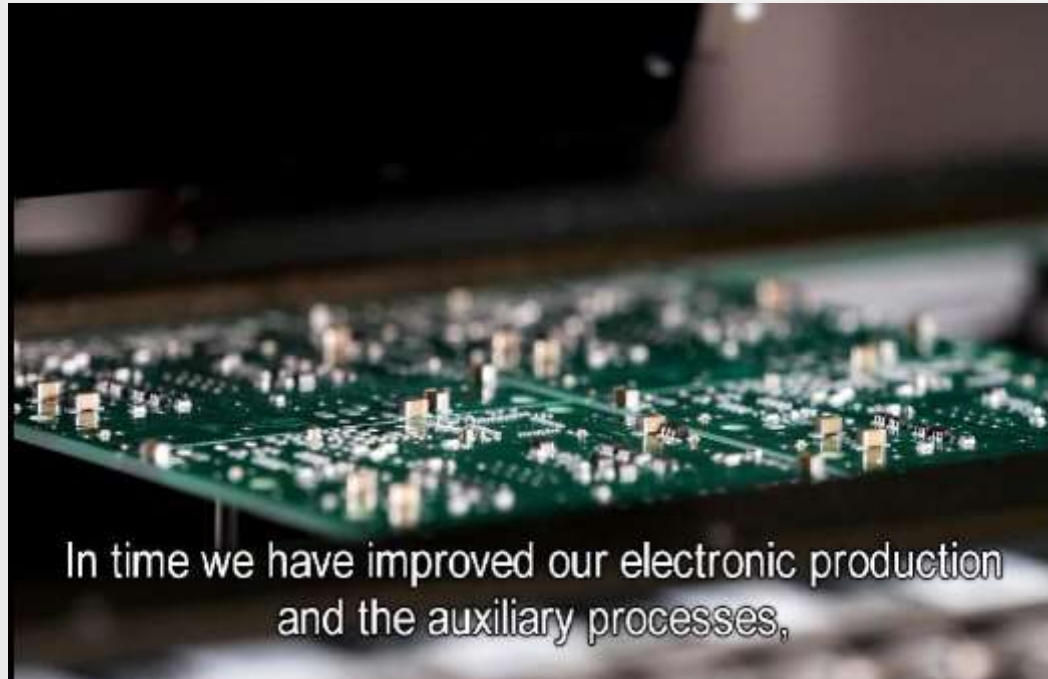
[WWW.EBS-ELECTRIC.EU](http://WWW.EBS-ELECTRIC.EU)

# SUMMARY

Structure of Group Companies	06
Technical services for the electronic industry	08
Financial projections (2018-2022)	19
Quality Management	21

## FOREWORD

" We say that we must own and control the technologies behind the products that we make and actively participate in increasing their performance and quality."



### Our Vision

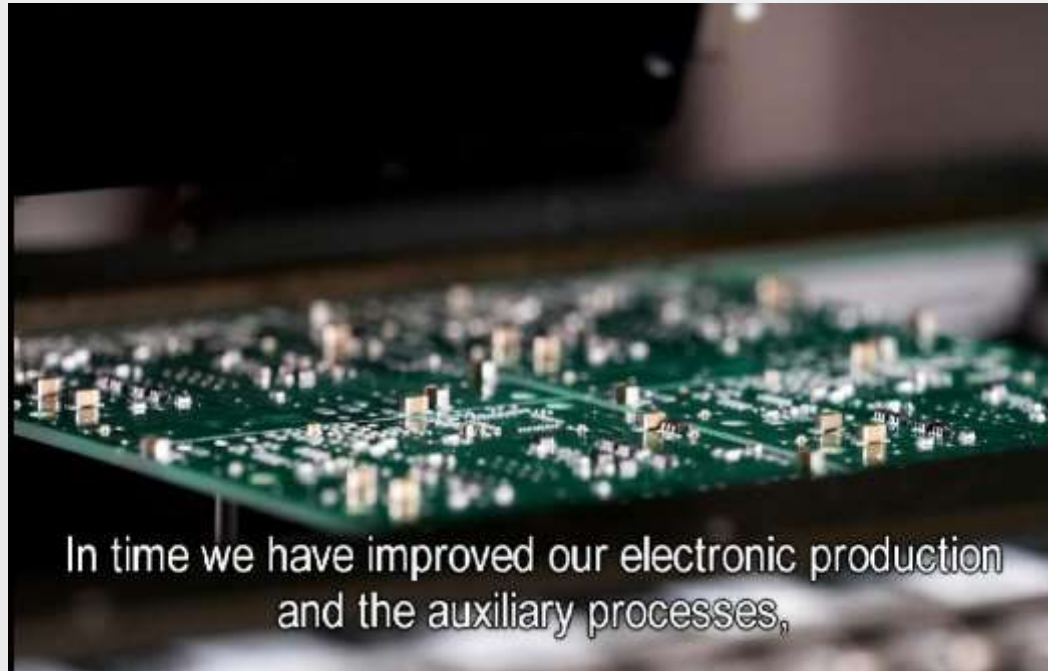
- ❖ Positioning on new market segments - diversification within the industry and diversification of the product range.
- ❖ Ranking in the top 5 companies with Romanian capital in the field of electronic manufacturing services.
- ❖ Through our experience and business ethics, we want to bring the value of our technical and technological knowledge to our customers and partners.

### Our Mission

- ❖ The goal of our company is to gain value for the benefit of our customers.
- ❖ We want to be a long-term partner for our clients, offering complete professional solutions adapted to their needs.

## FOREWORD

" We say that we must own and control the technologies behind the products that we make and actively participate in increasing their performance and quality."



### The Customers:

- ❖ The customer's interest takes precedence over profit.
- ❖ Offers made to customers are always honest and advantageous.
- ❖ The flexibility and mobility of our departments give business advantages to our customers.

### The Employees:

- ❖ For us, employees are the soul and brain of the company.
- ❖ Continuous training of our employees means the progress of our company.
- ❖ The employee loyalty - business continuity.

### Innovation

- ❖ The design department is constantly looking for new market demands, developing new products and new services.
- ❖ Through the design department, the speed of response to customer requests is high.

## FOREWORD

" We say that we must own and control the technologies behind the products that we make and actively participate in increasing their performance and quality."



### The Honesty:

- ❖ We approach a sincere and honest relationship with our employees.
- ❖ Respect and trust for our customers.
- ❖ We treat competition with respect and we are in direct and honest competition.

### The Technology:

- ❖ Sustained investment in know-how technology helps us to keep ahead of the competition.
- ❖ With sustained investments in technology, we support the company's values.

### Policy:

- ❖ We respect customer requirements, creating value for their benefit.
- ❖ We continuously measure, evaluate and improve our work.
- ❖ We ensure the continuous increase of customer satisfaction.
- ❖ Sincerity and honesty in the relationship with customers.
- ❖ Protecting the environment by increasing the recovery of electrical and electronic waste.

# BUSINESS NETWORK



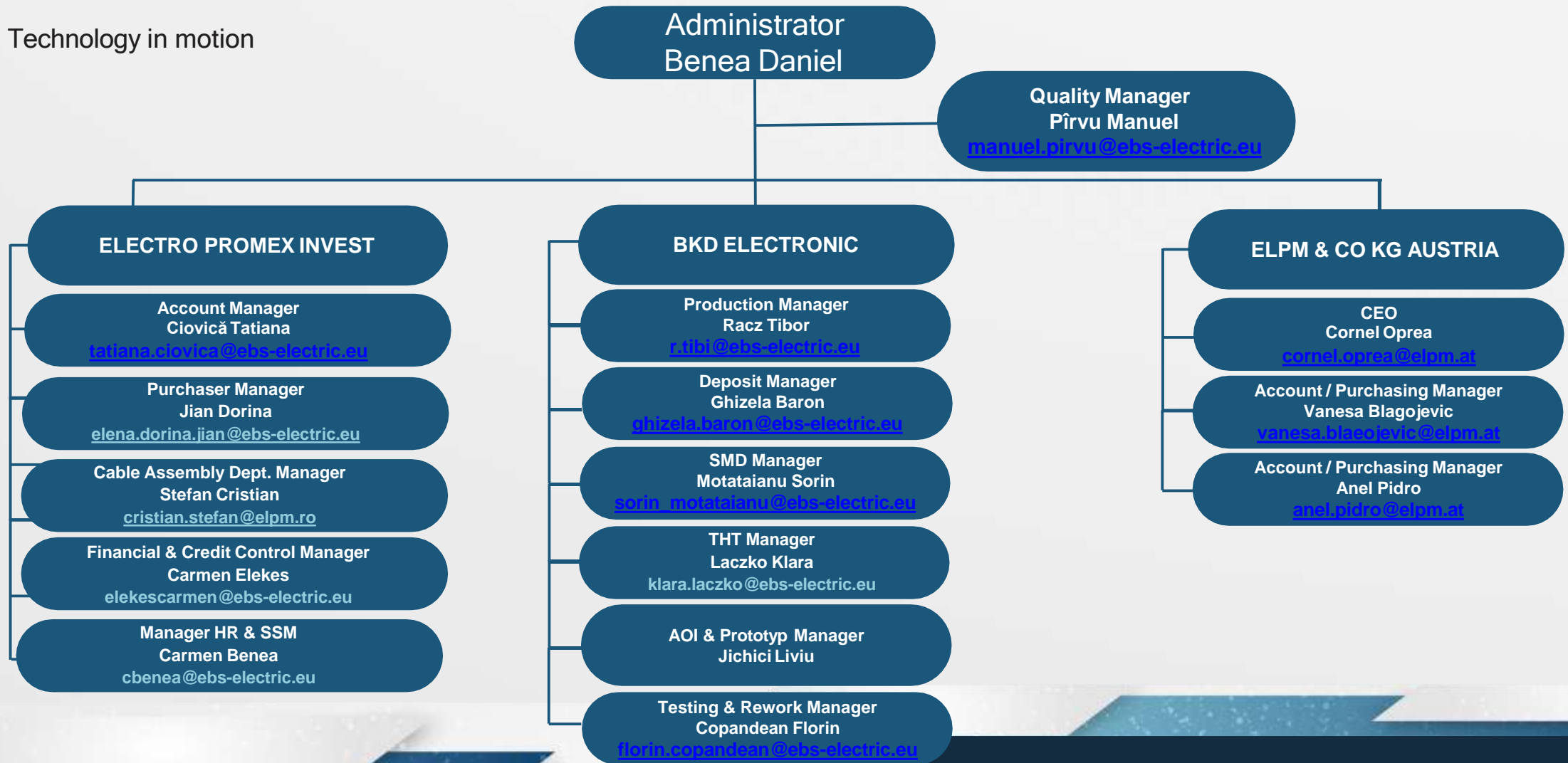
## STRUCTURE OF GROUP COMPANIES

---

# STRUCTURE OF GROUP COMPANIES

TECHNOLOGY IN MOTION

Technology in motion





TECHNICAL  
SERVICES  
FOR THE  
ELECTRONIC  
INDUSTRY

---



## OUR SERVICES

Our electronic production solutions include complete services for the supply of electronic components, PCB assembly, selective coating, cable assembly, functional testing and rework, while having the ability and experience to transpose your ideas into real technological solutions through product development services: prototype development, schematic design & layout, development of software applications for microcontrollers.



### BOOM SUPPLY

We understand how important management of suppliers is for our clients. That's why we have developed numerous collaborations and commercial relations with all major suppliers of electronic components from Europe



### PRODUCT DEVELOPMENT

Product development is very important for us. We offer full electronic manufacturing services, from a schematic design and PCB layout to the production of a complete PCB Assembly that will be taken through a functional testing process.



### ELECTRONIC MANUFACTURING

We provide full EMS services, with experience in electronic module assembling in Romania and Austria. We run our own latest-generation SMT production lines and we bring you the highest quality services in final assembling of electronic modules.



### CABLE AND ELECTRICAL WIRING

We have invested in cable assembly technology, acquiring highly efficient, flexible equipment, capable of performing a wide range of applications. This allows us to assembly any type of cable required by our customers, according to quality standards required by IPC/WHMA-A-620.

## BOOM SUPPLY



Regardless of requirements: full or partial supply or assembly services

- with customer-supplied packages - our supply departments in Romania and Austria offer you efficient solutions:

- ❖ Supply consulting
- ❖ Complete range of acquisitions for the electronic industry
- ❖ Reduced costs for electronic component purchases
- ❖ Management of obsolete components
- ❖ Excess stock management.

# PRODUCT DEVELOPMENT



Product development is very important for us. We offer full electronic manufacturing services, from a schematic design and PCB layout to the production of a complete PCB Assembly that will be taken through a functional testing process.

Our R&D department assures our customers:

- ❖ New product development (NPD)
- ❖ Schematic designing & PCB layouting
- ❖ Software applications development for microcontrollers
- ❖ Dezvoltarea de soluții hardware pentru testarea funcțională
- ❖ Development of software applications for functional testing
- ❖ Prototyping

# ELECTRONIC MANUFACTURING



We provide full EMS services, with experience in electronic module assembling in Romania and Austria. We run our own latest-generation SMT production lines and we bring you the highest quality services in final assembling of electronic modules.

- ❖ SMD Assembly
- ❖ THT Assembly
- ❖ PCB Conformal coating
- ❖ Functional Testing
- ❖ Final product assembly
- ❖ Cables and electronic wiring assembly
- ❖ SMD and THT repairs and reworking of PCBs

# CABLE AND ELECTRICAL WIRING



Electronic modules for interconnecting between them, needs conductors and electrical wiring.

We assure our customers:

- ❖ design of wiring and conductors for connecting electrical modules
- ❖ Production of electrical cables and wiring, activity that is carried out with automatic equipment ensuring superior quality, traceability of and speed of execution.

We are oriented for the execution of electrical wiring with cables from AWG28 ÷ AWG 10

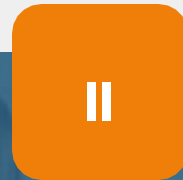
# OUR TECHNOLOGIES

We are a full EMS service provider with long experience in Romania and Austria. We have SMD production lines and we help you with services that involves final assembly for electronic products. Our ability to assemble electronic modules in Romania is provided by a young and professional team of engineers ready to provide technical support at any time for both the manufacturing and testing process.



## SMD ASSEMBLY

We invested from the beginning in the SMD Assembly technology, becoming one of the first companies in Romania that owned this kind of technology for assembling electronic components.



## THT ASSEMBLY

The process that involves soldering of THT components.

For soldering the THT components we have soldering stations Hakko FX951



## CONFORMAL COATING

Products designed to withstand harsh environments like those for industrial use need protection through conformal coating. We offer automatic conformal coating, non-atomized, which allows us to apply the coating with a viscosity of less than 100 centipoise.

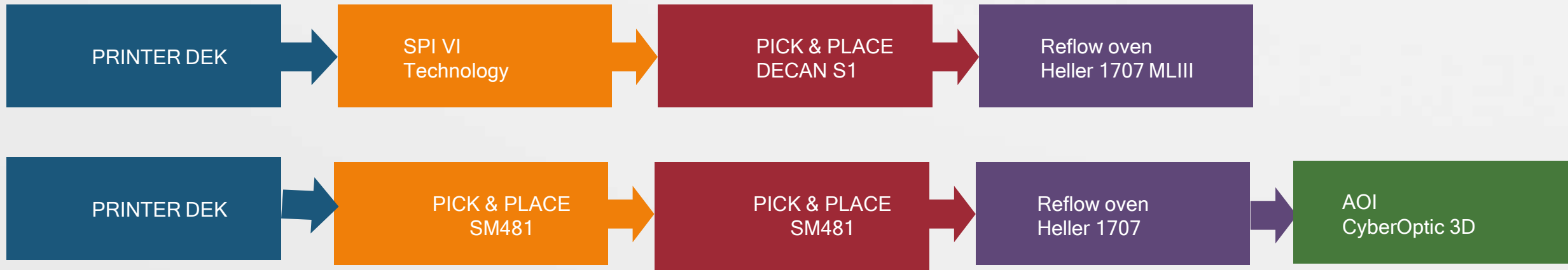


## INSPECTION & TESTING

We offer customized functional testing services using our own software as well as rack & stack hardware solutions. Our services include consulting and assistance in the initial stages of product development, to assess testability.

# SMD ASSEMBLY LINE

## I Structure of production lines



Planting accuracy  
Component size  
Maximum component height

±50 um  
0201 ÷ 14 mm  
15mm

Min. Dimension PCB  
Max. Dimension PCB  
PCB thickness

50x40mm  
460x510mm  
0,38 ÷ 4,2mm

**Assembly capacity**  
÷ 50000 cph

# THT ASSEMBLY

The process that involves soldering of THT.

For soldering the THT components we have soldering stations Hakko FX951 and by the end of this year the acquisition of a selective automatic soldering line type: Integra 508.2.

THT assembly is done with highly qualified personnel with a minimum of 5 years experience. For THT assembly we have an assembly capacity of 2000cph.





## CONFORMAL COATING

Products designed to withstand harsh environments like those for industrial use need protection through conformal coating. We offer automatic conformal coating, non-atomized, which allows us to apply the coating with a viscosity of less than 100 centipoise.

Thickness of protection layers varies between 0.5 and 8 mils for solvent-based materials and between 4 and 8 mils for 100% solid materials. With a 99% transfer efficiency, coating offers maximal optimization at minimal costs.



The process of conformal coating has numerous advantages:

- ❖ Material is being applied in layers in a controlled manner, eliminating the losses and unwanted coating associated with the atomized process
- ❖ Reduces the need for subsequent processing
- ❖ The coating application process takes place within an enclosed, ventilated environment.
- ❖ Excellent coating capacity, due to the five-axis motion system
- ❖ A wide range of dispensing nozzles is available, with sizes ranging from 6,35 to 19,05 mm, each having a 0,792 mm tolerance.
- ❖ Covers coating boards measuring up to 457 x 387 mm, ensuring conformal protection of even high-complexity boards in a manner of seconds.

# INSPECTION & TESTING

### Automated Optical Inspection – AOI

Carried out immediately after the assembly of components on the PCB, the automated optical inspection allows for:

- ❖ Quickly and accurately identifying faults in the quality of boards during early stages: lack or wrong placement of components, quality issues regarding the volume and shape of solders, short-circuits between finepitch component pins, etc.; with the help of OCR (optical character recognition) function, codes displayed by components can be recognised, thus ensuring that components or certain value or type are placed at the right location. This has a significant cost-related importance, especially when small components are present, where a possible rework PCB or replacement would require significant time and costs.
- ❖ Error detection - detecting errors in the solder printing, component placing and soldering within the reflow oven process. Insufficient or excess solder on components can be detected, which can be corrected by choosing a different stencil thickness or building a variable thickness stencil (recess stencil). Analysing the shape of soldering can determine the choice of a different oven temperature profile or soldering times.



### Functional testing

We offer customized functional testing using our own software as well rack & stack hardware solutions. Our services include consultancy and assistance, especially in the early phases of product development, in order to evaluate the testability. We also offer you software development for functional testing, if needed for testing procedures within your laboratory anytime you want.



Financial  
Projections

# FINANCIAL PROJECTIONS

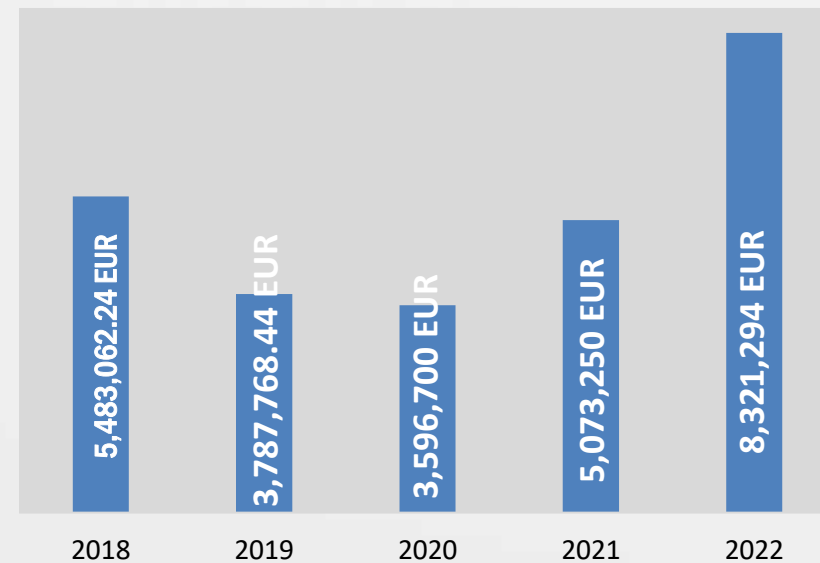
# FINANCIAL PROJECTIONS

In the economy of any company there are points of inflection that converge towards long-term sustainable growth.

Despite the fact that the company's turnover has decreased, the management has decided to invest in a new SMD production line and in a selective soldering line, with the help of which the skills and the quality of the services offered to our clients increase.

In today's economic context - the pandemic - the world economy is being reformulated and our group of companies is ready to take over projects for companies that will relocate from China

Financial evolution over the last 3 years





**QUALITY  
MANAGEMENT**

**CUSTOMER  
SATISFACTION**

**QUALITY  
MANAGEMENT**

---

**REGULATIONS**

**STANDARDS**

## QUALITY MANAGEMENT

For us, as electronic manufacturing services suppliers, the quality, execution speed and price optimisation are a priority. The intent of each EBS Electronic Group employee of assuring client satisfaction is the moving force behind our quality assurance policies and procedures.

### Our committed principles for quality assurance:

- ▶ The quality of our products and services which we supply as a [company](#) group is the responsibility of every employee
- ▶ We continuously struggle to exceed clients' expectations
- ▶ Quality assurance is product included and it is not an element that is only taken into consideration afterwards
- ▶ Measurement, analysis and constant improvement

