



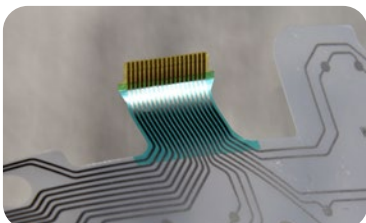
MERCURY DRAWERS

Mercury drawers is the top of the range professional laser system for CO₂ laser cutting

- **Mercury drawers** is a laser system designed for cutting sheets and roll materials. Processable materials are: foils, metal foils, thermoplastic polymers, polyester, conductive polyester, PET/PP, PEI/PS, PEN/PN and FEP.
- Thanks to the drawers, the operator can load and unload the material in masked time: laser never stops processing, productivity is highly increased and production time is almost halved. Operations can be automatic and/or manual, as well as it is possible to interface with automations or robot.
- **Mercury drawers** is a plotter system equipped with linear magnetic motion control and motorized Z axis.
- The CCD Camera allows the registry laser cutting and the automatic files upload.
- **Mercury drawers** has an electrowelded steel frame, which gives strength and solidity.
- **Mercury drawers** is characterized by a wide flexibility of use and high performances: it can reach 2000 mm/s and 2 g acceleration.
- **Mercury drawers** combines the highest accuracy ($\pm 0,05$ mm/m) and repeatability ($\pm 0,01$ mm) to ensure a unique quality.
- Icaro software (CAM) is user-friendly.
- **Mercury drawers** adopts the most advanced Class 1 protection system, such as interlocks and safety laser scanners.



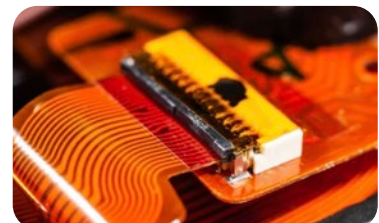
High precision cutting



High quality



High flexibility





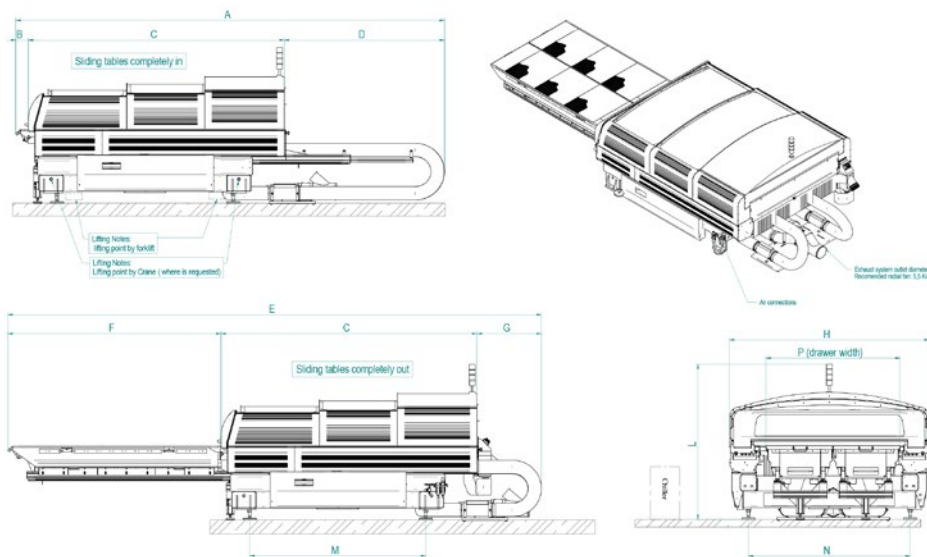
MERCURY DRAWERS

Main technical features:

| Available models | 1215 | 1510 | 1520 | 1530 | 2030 |
|-----------------------------------|--|-----------|-----------|-----------|-----------|
| Single drawer working area (mm) | 625x1550 | 750x1000 | 750x2050 | 750x3080 | 1000x3080 |
| Double drawer working area (mm) | 1250x1550 | 1500x1000 | 1500x2050 | 1500x3080 | 2000x3080 |
| Laser power (W) | 150-500 | 150-800 | | 150-1200 | |
| Maximum material thickness (mm) | | | | 50 | |
| Maximum load (kg/m ²) | | | | 40 | |
| Z axis travel (mm) | | | | 70 | |
| Accuracy (mm/m) | | | | 0,05 | |
| Repeatability (mm) | | | | 0,01 | |
| Software interface | CAD/CAM Icaro on Windows™ platform | | | | |
| Vector images import | .dxf; .plt; .ai; .eps; .pdf; | | | | |
| Norm compliance | 2014/35/EU Low Voltage Directive | | | | |
| | 2006/42/CE Machinery Directive | | | | |
| | 2014/30/EU Electromagnetic Compatibility Directive | | | | |
| | IEC EN 60825- 1 Laser Safety | | | | |

Dimensions and Weight

| Available models | 1215 | 1510 | 1520 | 2030 |
|-----------------------|----------------|----------------|----------------|----------------|
| Dimensions AxHxL (mm) | 4750x2140x1900 | 2420x2530x2200 | 5415x2400x1900 | 7008x3010x1900 |
| Dimensions ExHxL (mm) | 6050x2140x1900 | 3700x2530x2200 | 6615x2400x1900 | 7608x3010x1900 |
| Weight (Kg) | 2300 | 3500 | 3100 | 4000 |



Available options to increase flexibility and automation:

- Metal cutting kit with cutting head H.P. and capacitive sensor
- 3D kit for cutting 3D surface materials
- Class 1 coverage

SEI S.p.A. Via R. Ruffilli, 1 - 24035 Curno (BG) - Italy

T. +39 035 4376016 - F. +39 035 463843 - info@seilaser.com - www.seilaser.com